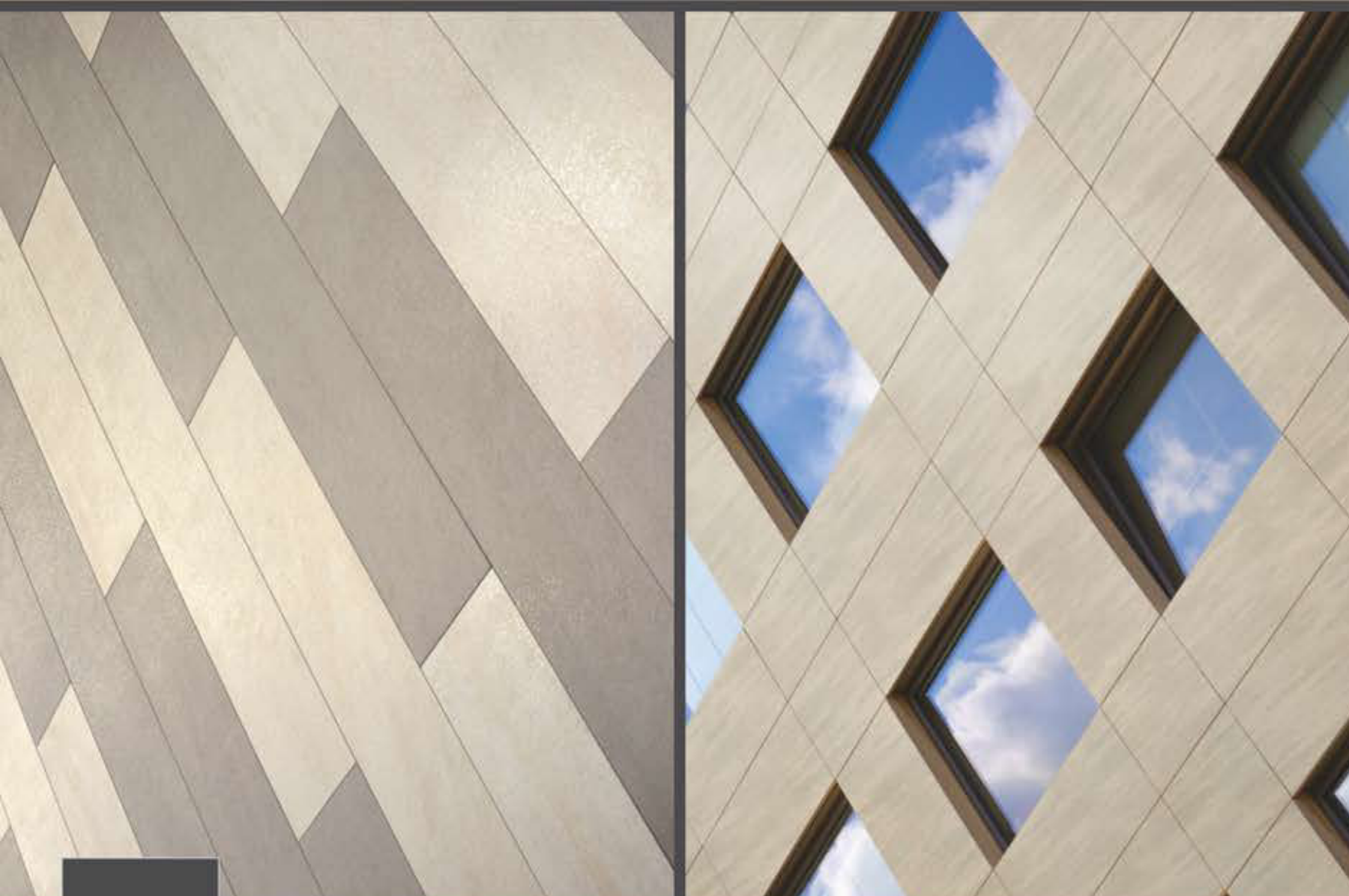




TATRY Beige SR 1200x1200 mm
TATRY Beige SR 1200x1200 mm



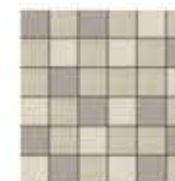
TATRY Graphite SR 1200x1200 mm
TATRY Graphit SR 1200x1200 mm



TATRY Pearl SR 1200x1200 mm
TATRY Perlmutt SR 1200x1200 mm



TATRY Walnut SR 1200x1200 mm
TATRY Walnuss SR 1200x1200 mm



Mosaic TATRY 300x300 mm
Mosaic TATRY 300x300 mm

- | | |
|--|---|
|  Structural SR
Strukturiert SR |  Polished / Lappato PLR
Poliert / Lappiert PLR |
|  Lappato LR
Lappiert LR |  Light lappato LLR
Leicht lappiert LLR |
|  The thickness 10,5 mm
Stärke 10,5 mm |  The thickness 13 mm
Stärke 13 mm |

TATRY

TECHNICAL PORCELAIN • TECHNISCHES FEINSTEINZEUG